

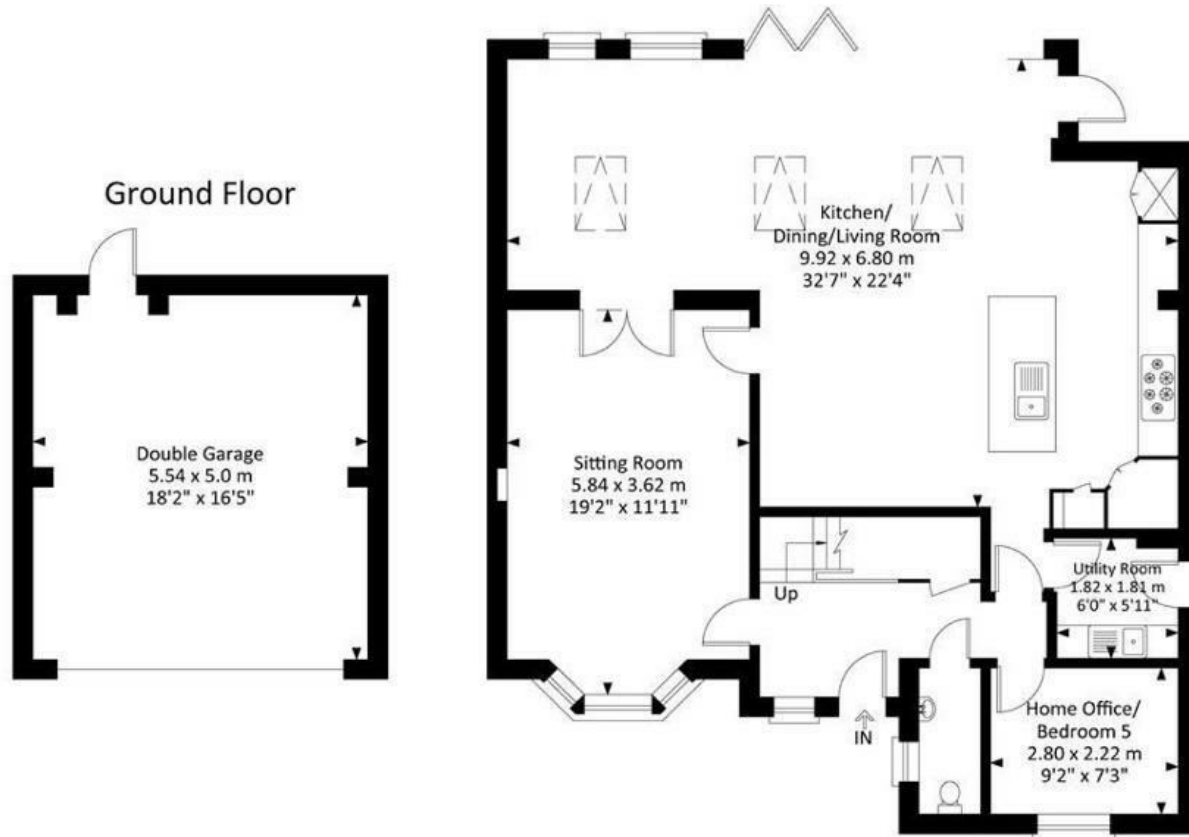
# Pitlochry Close

## FILTON PARK

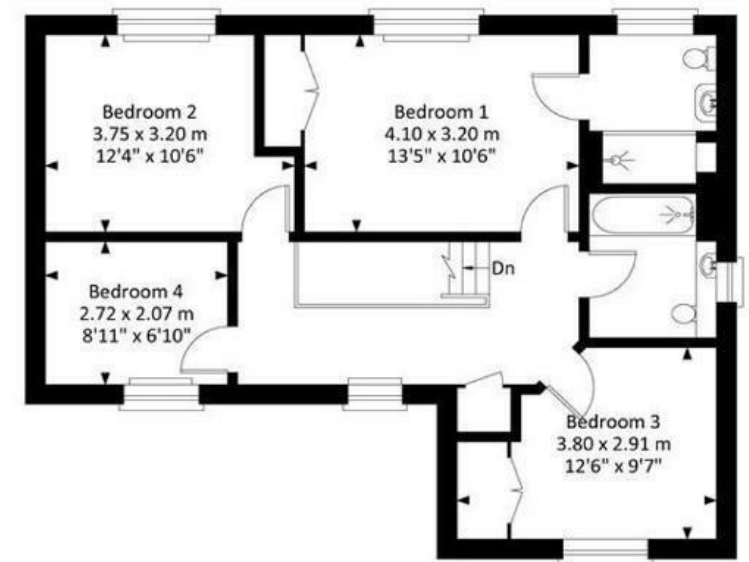
APPROXIMATE FLOOR AREA  
162.2 SQM / 1746 SQFT



Ground Floor



First Floor



Illustrations are for reference purposes only, measurements are approximate, not to scale.

**Boardwalk**

# Pitlochry Close

FILTON PARK, BRISTOL



£700,000



4 Bedrooms



BS7 0TU



3 Bathrooms

*"We love the space and light in the home and there is an abundance of storage. The extended living area is great for entertaining and family life. The south facing garden is a relaxing sunny retreat. The street has direct access to Monks Park where the children have spent many hours. There are lots of families close by so it's great for the kids. This is a peaceful area with plenty of parking and we find it really easy to get to Gloucester road and other local high streets. The Inn on the Green and Crafty Cow are favourites for a drink and food."*

